

BURS

Acrylic Trimming Burs (Low speed)



- Used to trim, adjust and shape acrylics, composites, plastics, stone and metals.
- Set covers commonly used shapes for veterinary dentistry.
- Straight HP shaft for low-speed handpiece (doriot-type).
- Carbide tip, stainless steel shaft.

917. Acrylic trimming bur - straight (fine)	\$33.95
918. Acrylic trimming bur - tapered (medium).....	\$25.95
919. Acrylic trimming bur - bullet (fine)	\$33.95
920. Acrylic trimming bur - bullet (coarse).....	\$37.25
921. Acrylic trimming bur - pear (medium)	\$37.25
922. Acrylic trimming bur - Set of 5 + bur block & lid	\$179.95

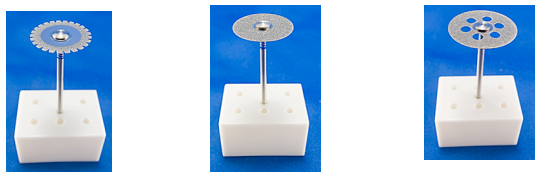
Goldie Burs

Carbide Handpiece (HP) burs with titanium nitride coating for extended life.



3193. Cross Cut for rapid cutting 1ea	\$49.95
3194. Coarse-cut for reducing of metal, acrylic and stone 1ea	\$33.95

Diamond Cutting Discs (Low speed)



- Diamond coated (double-sided) cutting discs, with H.P. shafts.
- For sectioning teeth and crown height reduction (disarming).
- Always use with safety shield (see below).

404. Diamond disc 946/180 serrated diameter 1.8cm.	\$36.00
405. Diamond disc 918B/200 flexible diameter 2.0cm.	\$36.00
406. Diamond disc 918PB/220 flexible, perforated diameter 2.2cm .	\$36.00

Diamond Disc Safety Shield



- Safety shield protects operator from potential danger of spinning diamond cutting disc.

874. Diamond disc safety shield + Doriot-type adaptor	\$56.95
---	---------

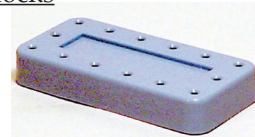
Bur Holder w/lid

Autoclaveable bur holder with lid. Holds 12 friction grip or latch type burs in silicone inserts. Measures 3 1/2" x 1 1/4" x 2" tall.



5069.....	\$24.95
-----------	---------

Bur Blocks



715. Magnetic bur block-square (blue) (holds 8, FG, RA or HP)	\$13.50
923. Magnetic bur block + lid, small (blue) (holds 8 FG, RA).....	\$22.25
924. Magnetic bur block + lid, small (white) (holds 8 FG, RA).....	\$22.25
925. Magnetic bur block + lid, large (blue) (holds 14 FG, RA, HP).....	\$21.25
926. Magnetic bur block & lid, large, (white) (holds 14 FG, RA, HP)	\$21.25

Bur Block w/cover Type C

Durable aluminum with plastic cover type C. Holds 12 Right Angle (low speed) and 12 Friction Grip (high speed) burs. Dimensions: 60 x 45 x 44 mm (W x H x D). Autoclavable.



2816.....	\$14.95
-----------	---------



714. Bur caddy (blue) - (holds 12FG or RA)	\$14.50
--	---------

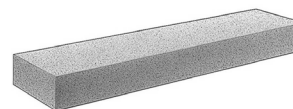
Bur Cleaning Brush - Fiberglass



- Removes rust and dirt from metal surfaces, as well as polishing.
- Fine fiberglass bristles screw in and out for variable stiffness.

462. Bur cleaning brush - fiberglass.	\$9.95
463. Fiberglass brush refill.....	\$2.00

Diamond Cleaning Stone



Removed debris from diamond instruments and restore cutting edges of diamond particles.

410.....	\$29.95
----------	---------

Denti-Drapes™

Keep your patients clean and dry during dental procedures.



- New water resistant drapes for dental procedures.
- Keeps hair and ears clean and dry from water spray, blood, debris and prophypaste.
- Easily applied. Elastic fits contour of head.
- Machine or hand washable but do not machine dry.

1117. Denti-drape™, Cat.....	\$17.50
1118. Denti-drape™, Dog - Small.....	\$17.50
1119. Denti-drape™, Dog - Medium.....	\$21.50
1120. Denti-drape™, Dog - Large.....	\$24.50
1121. Denti-drape™, Dog - XLarge.....	\$26.50
1122. Denti-drape™, Dog - Set (one each of 5 sizes)	\$99.95

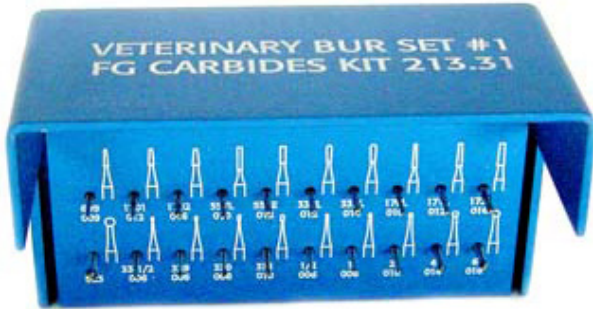
BURS

BURS

Long lasting high quality sets contain convenient assortments
Use the numbers on the blocks to reorder the ones you use most often. FG=Friction grip; L= Long head.

Veterinary Bur Set #1 (High speed)

This is the best set for general veterinary dentistry.
Assortment of 20 FG carbides for general dentistry. Set contains 1 each of #'s 634-654. Available individually in packs of 5. Length 19mm.



633A. Set #1 with autoclavable aluminum bur block.....	\$89.95
634. #1/2 round H1.31.006.....	\$13.95
635. #1 round H1.31.008.....	\$13.95
636. #2 round H1.31.010.....	\$13.95
637. #4 round H1.31.014.....	\$13.95
638. #6 round H1.31.018.....	\$13.95
639. #8 round H1.31.023.....	\$13.95
640. #33 1/2 inverted cone H2.31.006.....	\$13.95
641. #329 pear H7.31.006.....	\$13.95
642. #330 pear H7.31.008.....	\$13.95
643. #331 pear H7.31.010.....	\$13.95
644. #332L long pear H7L.31.012.....	\$13.95
645. #333L long pear H7L.31.014.....	\$13.95
646. #170L long tapered fissure H23L.31.010.....	\$13.95
647. #171L long tapered fissure H23L.31.012.....	\$13.95
648. #172L long tapered fissure H23L.31.016.....	\$13.95
649. # 699 cross cut tapered fissure H33.31.009.....	\$13.95
650. #1701 round end cross cut tapered fissure H33R.31.012.....	\$13.95
651. #1702 round end cross cut tapered fissure H33R.31.016.....	\$13.95
652. #557L long cross cut fissure H31L.31.010.....	\$13.95
653. #557E cross cut fissure H21E.31.010.....	\$48.00
654. #557E cross cut fissure H21E.31.010 (each).....	\$9.95

Additional FG Carbides

3699. #701L long flat end tapered fissure H33L.31.012.....	\$13.95
3700. #700 cross cut tapered fissure H33.31.010.....	\$13.95
3703. 12 flute Football Shape #7406 H379.31.018.....	\$49.95
3704. #1/4 round H1.31.005.....	\$13.95
3705. #3 round H1.31.012.....	\$13.95
3706. #556 flat end cross cut fissure H31.31.009.....	\$13.95
3707. #168 flat end tapered fissure H23.31.008.....	\$13.95
3708. #169-009 flat end tapered fissure H23.31.009.....	\$13.95
3709. #173 flat end tapered fissure H23.31.021.....	\$13.95
3710. #701 flat end tapered fissure H33.31.012.....	\$13.95
3711. #702 flat end tapered fissure H33.31.016.....	\$13.95
3712. #703 flat end tapered fissure H33.31.021.....	\$13.95
3991. #330SC Pear H7.31.008.....	\$13.95
3992. #34 Inverted Cone H2.31.0080.....	\$13.95
3993. #35 Inverted Cone H2.31.010.....	\$13.95
3994. #36 Inverted Cone H2.31.012.....	\$13.95
3995. #58 Plain Fissure H21.31.012.....	\$13.95
3996. #56 Plain Fissure H21.31.009.....	\$13.95

Round - Cavities, access holes, apicoectomies, trimming, osteoplasty (reshaping of bone) & osteotomy (removal of bone).



Inverted cone/pear - Creates an undercut for retention of filling materials. (Pears prevent potential fracture lines created by larger inverted cones).

Inverted Cone



Pear



Fissure - Sectioning, crown reduction, odontoplasty (reshaping of tooth), osteotomy for root extraction, smoothing & preparation of cavity walls, removing crowns & acrylic splints.

Flat

Flat Tapered

Round

Round Tapered

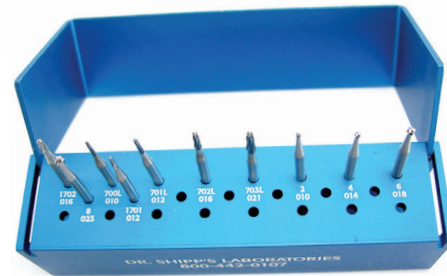


E-cut (end-cutting) fissure - Osteoplasty & alveolar crest reduction.



Veterinary Bur Set #2 (High speed) Surgical Length

Assortment of 10 FG Surgical length carbides for general dentistry where a longer shank is required. Useful for large carnassials & canines. Set contains 1 each of #'s 656-665. Available individually in packs of 5. Length 25mm.



655A. Set #2 with autoclavable aluminum bur block.....	\$87.95
656. #2 round H1.36.010.....	\$25.95
657. #4 round H1.36.014.....	\$25.95
658. #6 round H1.36.018.....	\$25.95
659. #8 round H1.36.023.....	\$25.95
660. #33 1/2 inverted cone H2.36.006.....	\$25.95
661. #1557 round end cross cut fissure H031RS.36.010.....	\$25.95
662. #1558 round end cross cut fissure H031RS.36.012.....	\$25.95
663. #170L long tapered fissure H23L.36.010.....	\$25.95
664. #701 cross cut tapered fissure H33.36.012.....	\$25.95
665. #702L long cross cut tapered fissure H33L.36.016.....	\$25.95

Additional FG Surgical Length Carbides

3698. #701L long flat end tapered fissure H33L.36.012.....	\$25.95
3701. #1/2 round H1.36.006.....	\$25.95
3702. #700 cross cut tapered fissure H33.36.010.....	\$25.95
3713. #1/4 round H1.36.005.....	\$25.95
3714. #1 round H1.36.008.....	\$25.95
3715. #3 round H1.36.012.....	\$25.95
3716. #556 flat end cross cut fissure H31.36.009.....	\$25.95
3717. #557 flat end cross cut fissure H31.36.010.....	\$25.95
3718. #558 flat end cross cut fissure H31.36.012.....	\$25.95
3719. #171 flat end tapered fissure H23.36.012.....	\$25.95
3720. #172 flat end tapered fissure H23.36.016.....	\$25.95
3722. #703 flat end tapered fissure H33.36.021.....	\$25.95

Veterinary Cutting Diamond Bur Set #4 (High Speed)

For crown preparation, reshaping, occlusal reduction, access preparation, smoothing tooth structure and restoration materials. Set contains assortment of 10 and available individually.

Modified bevel cylinder - Gross reduction and shaping for crown preps, odontoplasty, post entry, bevels, margins & shoulders.



Needle - More detailed crown preparation, interproximal reduction & odontoplasty.



Round - Osteoplasty, odontoplasty, endo access, pulpotomies, cavities, de-epithelializing & abrading tissue.



Round end taper - Gross reduction and shaping for crown preps, odontoplasty (reshaping of tooth) & post entry.



- 677A. Set #4 with autoclavable aluminum bur block.....\$99.95
- 678. #850.31.014 long round tapered medium 24mm.....\$10.95
- 680. #6850.31.016 long round tapered coarse 24mm.....\$10.95
- 682. #5850.31.016 long round tapered super coarse 24mm.....\$10.95
- 684. #879.31.014 modified bevel medium 24mm.....\$10.95
- 686. #6879.31.016 modified bevel coarse 24mm.....\$10.95
- 688. #6859.31.018 needle coarse 24mm.....\$10.95
- 690. #801.31.010 round medium 24mm.....\$10.95
- 692. #801.31.014 round medium 19mm.....\$10.95
- 694. #801.31.018 round medium 19mm.....\$10.95
- 696. #3849L.31.009 round end tapered medium 19mm.....\$10.95
- 3721.#368.31.023 football medium 19mm.....\$10.95

Veterinary Finishing Diamond Bur Set #5 (High speed)

For finishing crown preps, odontoplasties, margins and restoration materials. Set contains assortment of 5 and available individually.

Flame & round end flame - Small teeth, interdental areas, margins & restorations.



Modified bevel cylinder & long round taper - Crown preps of large teeth, e.g. canine tooth & upper 4th premolar.

Needle EF -Extra fine, for finishing all teeth and restorations.



- 698A. Set #5 with autoclavable aluminum bur block.....\$76.95
- 699. #133F.31.010 flame 19mm.....\$10.95
- 701. #247F.31.009 round end tapered 19mm.....\$10.95
- 703. #8879.31.014 fine bevel cylinder 19mm.....\$10.95
- 705. #8850.31.014 long round tapered 24mm.....\$10.95
- 707. #859EF.31.018 needle 24mm.....\$17.95
- 3997. #379EF.31.023 Extra-Fine Football Diamond 19mm.....\$26.95

Low Speed

For low-speed electric or air handpieces. May be used to cut or drill tooth or bone, but will not work as effectively as high-speed burs.



Veterinary Handpiece Bur Set #3

Assortment of 10 HP carbides for general dentistry where a longer shank is required. Useful for large carnassials & canines. Set contains 1 each of #'s 667-676. Available individually in packs of 5. Length 44mm.

- 666A.Set #3 with autoclavable aluminum bur block.....\$129.95
- 668. #4 round H1.11.014.....\$15.95
- 669. #6 round H1.11.018.....\$15.95
- 670. #8 round H1.11.023.....\$15.95
- 671. #1701 rnd end cross cut tapered fissure H33R.11.012.....\$15.95
- 672. #1702 rnd end cross cut tapered fissure H33R.11.016.....\$15.95
- 673. # 699L long cross cut tapered fissure H33L.11.009.....\$15.95
- 674. # 701L long cross cut tapered fissure H33L.11.012.....\$15.95
- 675. # 702L long cross cut tapered fissure H33L.11.016.....\$15.95
- 676. # 703L long cross cut tapered fissure H33L.11.021.....\$15.95

Additional HP Carbides

- 3723. #1/4 round H1.11.005.....\$15.95
- 3725. #1 round H1.11.008.....\$15.95
- 3726. #3 round H1.11.012.....\$15.95
- 3727. #556 flat end fissure H31.11.009.....\$15.95
- 3731. #169 flat end tapered fissure H23.11.009.....\$15.95
- 1500. #8 65mm round sterile H1.15.023 (10 pk).....\$64.50
- 1501. #703 cross cut taper fissure 65mm sterile H33.15.021 (10 pk).....\$64.50

Veterinary Right Angle Latch Type Bur Set #6

Assortment of 5 RA carbides for general dentistry. Set contains 1 each of #'s 1043-3160. Available individually in packs of 5. Length 22mm.



- 1042A.Set #6 with autoclavable aluminum bur block.....\$69.95
- 1043. #2 round H1.21.010.....\$14.95
- 1044. #4 round H1.21.014.....\$14.95
- 1045. #6 round H1.21.018.....\$14.95
- 3156. #557 flat end cross cut fissure H31.21.010.....\$14.95
- 3160. #700 flat end tapered fissure H33.21.010.....\$14.95

Additional RA Latch Carbides

- 3148. #1/4 round H1.21.005.....\$14.95
- 3149. #1/2 round H1.21.006.....\$14.95
- 3150. #1 round H1.21.008.....\$14.95
- 3151. #3 round H1.21.012.....\$14.95
- 3157. #168 flat end tapered fissure H23.21.008.....\$14.95
- 3158. #169 flat end tapered fissure H23.21.009.....\$14.95
- 3697. #701 flat end tapered fissure H33.21.012.....\$14.95

