

DENTAL MODELS

Visi-Models™

Transparent dental models that speak 1000 words!

Visi-Model™

Clear durable urethane allows transparent three dimensional views of roots and teeth. Full skull easily shows the anatomical shapes, positions and proximity of roots to eye sockets and nasal cavity. Explain needed dental procedures without struggling with pet's mouth or using real skull to demonstrate suggested treatment.

Enables the technician or assistant to learn the dental anatomy more easily and is excellent for lecturing, wet labs and teaching students. Injection molded teeth are extra strong, natural color and are anatomically correct. Teeth can be drilled and restored (with acrylic), orthodontic devices, crowns and splints can be applied to the models for demonstration purposes.

Visi-Model™ Dog Skull



Visi-Model™ Cat Skull



Visi-Model™ Rabbit Skull



- 101A. Visi-Model™ - dog skull.....\$195.00
- 102. Visi-Model™ - cat skull.....\$195.00
- 103. Visi-Model™ - dog & cat skull Set.....\$350.00
- 4050. Visi-Model™ rabbit skull.....\$95.00
- 2677. Visi-Model Dog (full skull) w/radiopaque teeth.....\$329.95
- 2678. Visi-Model Cat (full skull) w/radiopaque teeth.....\$259.95

Visi-Form Models

All advantages of the original Visi-Model with the addition of removable teeth and gingiva and separate mandible and maxillary.



- 2857 Dog.....\$249.95
- 2858 Cat.....\$249.95

Clear Canine Jaw

Healthy canine hinged jaw showing the roots of all teeth (incisors, canine, premolars, molars). Can be separated for better observation. Made of durable high quality plastic. Model size is 4 3/4" x 2 3/4" x 2". Includes descriptive card.



- 4000.....\$94.50

Visi-Model™ Pug Skull



Differentiates brachycephalic dentition.

- 4040 Visi-Model Pug.....\$195.00

Dentoform Models

Provides the closest simulation to real life animal dentition by way of anatomical relationships, tooth hardness, gingival density and jaw articulation. Makes it possible to practice every aspect of dentistry including tooth extractions, periodontic and prosthodontic techniques, cavity preparation and routine cleanings.

Consists of an upper and lower jaw with properly placed removable Ivorine™ teeth and a fully adjustable joint articulator. Gingival versions simulate the gumline and are ideal for subgingival exercises.

- 3210. Feline Dentoform.....\$299.95
- 6210. Feline Dentoform w/radiopaque teeth.....\$330.50
- 3211. Feline Dentoform w/gingival.....\$381.25
- 3212. Feline Dentoform w/table top stand.....\$685.25
- 3213. Feline Dentoform w/gingiva and table top stand.....\$766.50
- 3214. Canine Dentoform.....\$373.95
- 6214. Canine Dentoform w/radiopaque teeth.....\$446.50
- 3215. Canine Dentoform w/gingival.....\$450.75
- 3216. Canine Dentoform w/table top stand.....\$759.95
- 3217. Canine Dentoform w/gingiva and table top stand.....\$855.95
- 3218. Table Mount for Feline/Canine Dentoforms.....\$384.50



3213



3210



3217



3214

Clear Feline Jaw

Healthy feline hinged jaw showing the roots of all teeth (incisors, canine, premolars, molars). Can be separated for better observation. Made of durable high quality plastic. Model size is 2 3/4" x 2" x 1 1/8". Includes descriptive card.



- 4001.....\$99.95

Veterinary Endodontic and Crown Prep Practice Models



Replicas of canine molar. Endo models have root canals and pulp for simulation of root canal procedures. Allows for drilling with high speed dental burs, cleaning, shaping and canal obturation. Can be used with dental x-ray systems to determine apex, size and depth of canal. Clear version to see canals and results. Crown preparation version contains no canals. All versions come with handles.

- 3201. Endo.....\$14.95
- 3202. Endo Clear.....\$14.95
- 3203. Crown Prep.....\$11.95

Pathology Models

- Demonstrate most of the common dental problems.
- Demonstrate most of the common dental problems.
- Common pathological conditions shown.
- Avoids struggling with pet to demonstrate problem.

Pathological Molar Model

Enlarged approximately 5X demonstrates many commonly found dental pathologies.

4015.....\$95.00



Periodontal Disease Stages Model

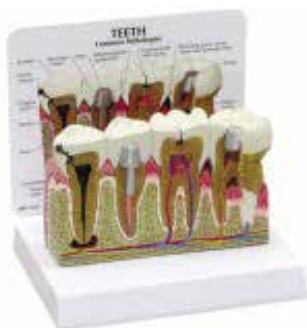
2X enlarged, cross-sectioned model graphically depicting the 5 different stages of periodontal disease. Models demonstrate healthy normal bone & tissue. Early, Moderate & Advanced Periodontitis along with Occlusal Trauma. Excellent model for patient demonstration.



4013.....\$129.95

Molar Anatomy/Pathology Model

Oversized human model of premolars and molars featuring tooth structure and many common dental problems including abscess, advanced periodontitis, cavity, crown, decay, filling, gingivitis, plaque, severe bone loss and finished root canal with post. Model size is canal with post. Plastic. Comes with Description card. Model size is 5-1/2" x 2" x 3-1/2".



3179.....\$96.95

Canine Pathology Jaw

Average size canine jaw depicts healthy teeth on the right side and diseased/damaged teeth on the left. The nine pathologies featured are: fractured canine, periodontal disease, tartar accumulation, plaque, gingivitis, worn incisors, retained deciduous tooth, gingival recession and missing premolar. The jaw may be opened, closed and separated for closer study. Plastic. Comes with Description card. Model Size: 4-3/4" x 2-3/4" x 2"



4023.....\$99.95

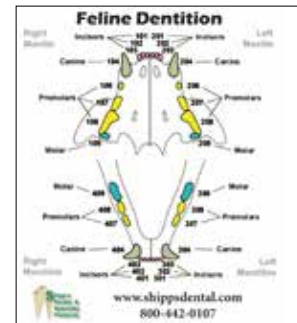
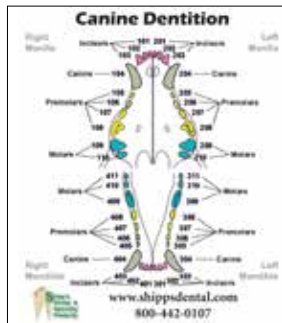
Feline Pathology Jaw

Average size feline jaw depicts healthy teeth on the right side and diseased/damaged teeth on the left. The eight pathologies featured are: fractured canine, periodontal disease, tartar accumulation, plaque, gingivitis, worn incisors, retained deciduous tooth and missing premolar. The jaw may be opened, closed and separated for closer study. Plastic. Comes with Description card. Model Size: 2-3/4" x 2" x 1-1/8"



4024.....\$89.95

Dentition Charts



- 4134. Canine Dentition Card.....\$5.95
- 4135. Feline Dentition Card.....\$5.95

ANATOMICAL MODELS

Models help clients understand organ problems and anatomy.

Ear Model



Features:

- Cutaway shows canine ear canal, tympanic membrane, ossicles, semicircular canals, cochlea, bulla, eustachian tube, parotid & mandibular salivary glands, temporal muscle, cerebrum & cerebellum.
- Ear canal shows wax, inflammation, infection, fox tail & polyp.
- Ear flap (pinna) shows hematoma (cut away), inflammation, fly strike & auricular cartilage.
- Size: H 7" x W 4" x D 2 1/2".
- Hand painted in color, plus colored explanatory chart.

441. Ear model (canine).....\$49.95

Heart Model



Features:

- Two piece model that opens in half, to show inner anatomy of human heart.
- Anatomy demonstrates: inner chambers, mitral and tricuspid valves, major blood vessels entering and leaving heart, and external cardiac vessels.
- Size: H 5" x W 6 1/2" x D 5" .
- Hand painted in color, plus colored explanatory chart.

444. Heart Model.....\$82.95

Companion Animal Kidney Model

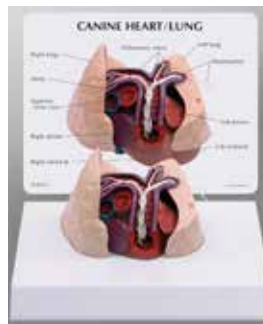
Two-piece model has a normal kidney with cutaway and a damaged kidney with cutaway depicting scarred renal pyramid, scarred renal cortex, renal vein atrophy, and renal artery atrophy. Plastic. Comes with description card. Model size is 6-1/2" x 5" x 4-1/2".



5149.....\$83.50

Canine Heart/Lung Model

Average Canine lungs and heart infested with heartworms. Cut away view demonstrates the right ventricle, pulmonary trunk and pulmonary arteries. Model size is 3 3/4" x 2 3/4" x 2 1/2".



4017.....\$78.95

Feline Heart/Lung Model

Average Feline lungs and heart infested with heartworms. Cut away view demonstrates the right ventricle, pulmonary trunk and pulmonary arteries. Cut section of the lung indicates heartworm induced irritation. Model size is 3 3/4" x 2 3/4" x 2 1/2".



4019.....\$85.95

Canine Skin Parasites Model

It is fairly common for dogs to become infected with an external parasite at some point in its lifetime and can cause simple irritation to life-threatening conditions if left untreated or infect and transmit diseases to people. This model The 3 most common are detailed in these sizes: Mite 4" x 2-1/4" x 2-1/2", Flea 4" x 1-1/2" x 3" and Tick 4" x 4 x 1-1/4". Base is 10-5/8" x 6-1/4".



3999.....\$139.95

Canine Skin Model

Enlarged cross section of canine skin. One side features normal skin anatomy extending from the epidermis down to the layer of subcutaneous fat. Side two demonstrates the progressing changes of a flea bite. Model size: 5 3/4" x 4 1/2" x 3".



4002.....\$95.95

Cataract Eye

This normal Eye model includes interchangeable lenses that show various types of cataract conditions including subcapsular, capsular, mature, cortical and nuclear. Card also highlights the visual effect of glaucoma. 5" x 4" x 3-3/4".



442A. Cataract Eye.....\$89.95

Brain Model

Normal right half brain with interior and exterior views. Features frontal, parietal, occipital and temporal lobes, cerebellum, interthalamic adhesion, corpus callosum, pons, midbrain-central peduncle, olfactory bulb, optic nerve, optic chiasm, mammillary body and medulla oblongata. Model size 6 1/2" x 5" x 2 1/2". Includes descriptive card.



4025.....\$76.95

Heart Disease Mini Model Set

Set of 3 hearts includes a normal, myocardial infarction demonstrating a partially healed, thinned, and discolored infarcted area including a thrombus in the apex, and a congestive failure heart illustrates enlarged and failing muscle. The left ventricle hypertrophy and the correspondingly enlarged and distorted shape is shown both internally and externally. Model sizes: Normal & MI 4" x 2-1/4" x 1-3/4" CHF 4" x 2-1/2" x 2-1/4". Includes descriptive cards.



4026.....\$112.95

Lung Model

Full size normal cut-away of right side of lung shows bronchus, arteries, vein, two lymph nodes, bronchial passages and trachea bifurcation. Model size 4-1/4" x 5-1/2" x 8-1/4". Includes descriptive card.



4027.....\$91.95

CPR Trainers

Developed to introduce basic CPR skills using compressions with working lungs, mouth to snout capabilities, and femoral pulse feature. Splinting, and bandaging can also be performed. Fur is completely removable and machine washable. Includes carrying case and five disposable lungs.



3450. Feline.....\$529.95
 3460. Canine.....\$449.95
 3462. Replacement Lungs 24's.....\$182.95
 3463. Replacement Lungs 72's.....\$522.25

SKELETONS

Cat Skeleton



Skeleton size approx: H 13" x W 5 1/2" x L 19"

1652. Cat skeleton (plastic).....\$229.95

Dog Skeleton



Skeleton size approx: H 13" x W 5 1/2" x L 19"

1654. Dog Skeleton (plastic).....\$229.95

NATURAL BONE SKULLS

All skulls are high quality and have good dentition. Please call for available breed specific skulls.

Cat Skull



1646. Cat skull (natural bone).....\$159.95

Rabbit Skull



1650. Rabbit skull (natural bone).....\$69.95

Dog Skulls



1648. Dog skull (natural bone).....\$195.95

Guinea Pig Skull



2651. Guinea pig skull (natural bone).....\$59.95

Models soon pay for themselves. Once the clients understand the medical problem, they are more likely to accept the treatment you suggest.

Each replica is scientifically cast to provide reproductions of unexcelled anatomical accuracy and minute detail. Although the models are made of natural bone-colored Urethane plastic, they look and feel like real bone. Removable for hand demonstration.

Canine Hip (Pelvis)



- Features:
- Right coxofemoral joint - normal.
 - Left coxofemoral joint - arthritis/hip dysplasia.
 - Lumbosacral (L/S) joint - ventral spondylosis.
 - Intervertebral disc (L6/L7 - normal).
 - Intervertebral disc (L/S joint) - dorso-laterally herniated.
 - Yellow flexible spinal cord and nerves.
 - All joints fully articulated with elastic cord.
 - Base size: 6 1/2" x 5"L.
 - Model Size: 7" x 5 1/2" x 11"

- Demonstrates:
- Full range of motion of hip joints, lumbosacral joint and vertebrae.
 - Herniated disc pressure on cord.

116. Canine Hip (Pelvis)..... \$135.00

Canine Knee (Stifle)



- Features:
- Patella ligaments.
 - Meniscus.
 - Collateral ligaments.
 - Cruciate ligaments.
 - Patella.
 - Articulated with elastic cord.
 - Plastic Base Size: 6 1/2" x 5"
 - Model Size: 2 x 3 1/2" x 7"

- Demonstrates:
- Internal/external rotation.
 - Flexion/extension.
 - Location of torn ligaments and meniscus.

117. Canine Knee (Stifle)..... \$99.00

Elbow



Healthy left canine elbow model of average size includes: humerus, radius and ulna bones; plus six ligaments. Model Size: 9-1/2" x 1-3/4" x 7-1/2" Plastic Base Size: 8-7/8" x 6-1/4"

118. Canine Elbow \$99.00

Osteo-Model™ Canine Lumbar Vertebrae

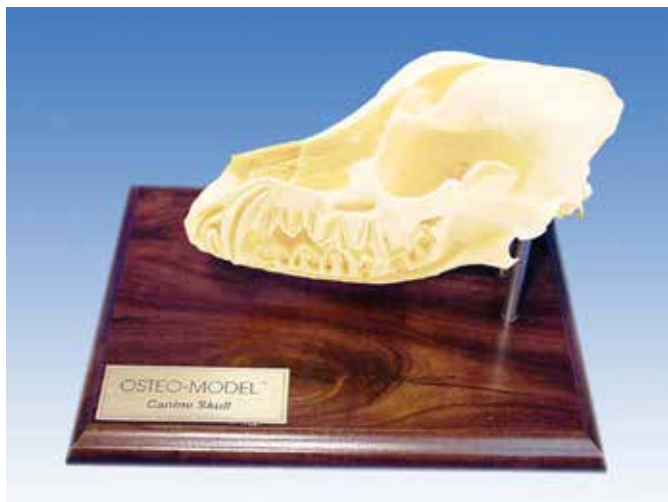


- Features:
- Lumbar vertebrae (L1-L5).
 - Intervertebral discs - normal (L1/L2) (L4/L5).
 - Intervertebral disc - dorso-laterally herniated (red) (L3/L4).
 - Intervertebral disc - dorsally herniated (red) (L2/L3).
 - Fenestration procedure.
 - Ventral spondylosis (L3/L4).
 - Yellow flexible spinal cord and nerves.
 - Articulated with elastic cord.
 - Base dimensions: 5"W x 7"L.

- Demonstrates:
- Herniated disc pressure on cord & lateral nerve.
 - Full range of motion of vertebrae.

119. Osteo-Model™, canine lumbar vertebrae..... \$99.00

OSTEO-MODELS™ Made in the U.S.A.



Osteo-Model™ Canine Skull

- Features:
- Exposed root canals of teeth.
 - Exposed alveolar bone tooth sockets.
 - Exposed nasal cavity demonstrating tooth relationship.
 - Exposed frontal sinus and cranium.
 - Exposed mandibular and infraorbital canals.
 - Mandible removable.
 - Access holes on crowns for root canal therapy.
 - Base dimensions: 7" W x 9" L.

- Demonstrates:
- Articulation of temporomandibular joint (TMJ).
 - Detailed anatomy of teeth, sockets & skull.

115. Osteo-Model™, canine skull\$145.00

Osteo-Model™ Canine Hock



- Features:
- Metatarsus.
 - Tibia.
 - Fibula.
 - Hock joint.
 - Phalanges with nails.
 - Achilles tendon.
 - Metatarsus tendon.
 - Base dimensions: 5" W x 7" L.

- Demonstrates:
- Foundation of movement
 - Lever action at pivot point.

104. Osteo-Model™, canine hock\$99.00

Canine Shoulder Model



- Features:
- Scapula
 - Humerus
 - Biceps Brachii Tendon
 - Coracobrachialis Tendon
 - Lateral Glenohumeral Ligament
 - Medial Glenohumeral Ligament
 - Transverse Humeral Ligament
 - Model Size: 11-1/8" x 3" x 2"
 - White plastic 6-1/2" x 5" base
 - Descriptive card

- Demonstrates:
- Average size dog shoulder

3041.....\$98.95

Canine 4 Stage Knee Model

Set of 4 life size models illustrate degenerative joint disease (Osteoarthritis). Disease free normal knee includes ligaments, tendons and patella. The others demonstrate progressive degeneration of the articular surfaces and development of bone spurs (Osteophytes). Model size is 2" x 3 1/2" x 7".



4018.....\$118.50

Feline Elbow/Shoulder Model

- Features:
- Scapula
 - Humerus
 - Radius
 - Ulna
 - 9 important tendons and ligaments
 - Model size 7 3/4" x 4" x 7/8"
 - White plastic 6-1/2" x 5" base
 - Descriptive card

- Demonstrates:
- Average size feline shoulder and elbow
 - Normal bone and osteoarthritic changes to joints



4021.....\$79.95

Feline Pelvis/Hip Model

- Features:
- Femur
 - Vertebrae L6, L7
 - Caudal (tail)
 - Spinal cord
 - Burn spurs (Osteophytes)
 - Model size 7" x 4 1/2" x 2 1/2"
 - White plastic 6-1/2" x 5" base
 - Descriptive card

- Demonstrates:
- Average size feline pelvis
 - Degenerative Osteoarthritis



4020.....\$79.95