

## X-RAY

### ImageWorks EVA Vet SELECT II Digital Dental Imaging System

The latest technology in a digital dental imaging system. Ultra-strong aluminum alloy housing and robust fiber optic cable connections are designed to extend the life of your sensor and protect your investment. It's beveled corners increase patient comfort and ease positioning while maintaining the active surface area. Includes ViewAll™ DICOM Acquisition Software to yield a smooth, efficient workflow and allow for integration with most industry leading practice management programs.



- Direct 3 meter USB 2.0 Connection with Re-enforced Fiber Optic Cable Connection
- Pixel Size: 29.6 µm
- Active Pixel Array: 1216x 878 pixels with Pixel Binning Technology
- Theoretical Resolution: 16.9 line pair/mm
- Certifications: MFDS, CE/MDD, FDA, Health Canada
- Recommended PC Specs: Intel® Core™ i5, 2.30 GHz, Dual-core, 8 GB standard memory, 500 GB hard drive, 15.6" Full HD LCD, resolution 1920 x 1080
- Available in Size #1.5 (29 x 38 x 4.8 mm) or Size #2 (31.5 x 43 x 4.8 mm)

Includes:

- ViewAll 5.0 DICOM Acquisition Software
- Protective Armor Jackets
- Starter Pack of non-sterile sheaths
- Warranty: 24 Months

5450. Vet Select II Size 1.5 Sensor with/ViewAll Software. ....\$8,950.00

5451. Vet Select II Size 2 Sensor with/ViewAll Software. ....\$8,950.00

### The Wedge

Dorsal positioning device designed for dental procedures on dogs and cats combining comfort and practicality. Anesthetic time is shortened as there is no need for patient repositioning once all monitoring devices are in place. Two piece design measures 25" long and 21" to 25" width with adjustable snaps. Weighs 4lbs. Some of the Wedge's other benefits include:



- \*Expandability
- \*Bacterial and Mold Resistant
- \*Water Resistant
- \*Durable
- \*User Friendly
- \*Improved Thermoregulation
- \*Lateral Stability
- \*Ease of Cleaning

6064 Black.....\$299.95

### VDT Dental X-Ray Positioning Guide

This book is a visual guide, designed to help the user take full mouth dental x-rays on a dog and a cat. The introduction explains the importance of dental x-rays, radiation safety, different x-ray systems and also explains what needs to be viewed in a diagnostic radiograph. The body of the book uses a series of pictures and text showing sensor placement, angle of the x-ray head, where to center the beam as well as what the x-ray is supposed to look like. By Jennifer Hertzoff, CVT of Veterinary Dentistry Training.



2817.....\$45.00

### ViewAll Digital Imaging Software 3.2

Available with EVA -Vet® sensors or separately as an upgrade for EVA VET ProImage for Windows 10 compatibility. Converts the database into DICOM compliant to streamline digital radiography enabling users to acquire and view digital images in one step. Enables multiple users within the practice to access and share EVA Vet images and other DICOM compatible digital images, as well as exporting to other veterinary practices or remote telemedicine services. Easy-to-learn, veterinary-specific interface includes a comprehensive breed list for dogs and cats and allows easy access to existing patient studies or create new studies. With standard tools for annotation, searching, and image manipulation, ViewAll is the complete and affordable solution for all veterinary dental X-ray imaging needs.



ViewAll® Features

- Train your staff on one application
- STAT Patient mode for instant image acquisition
- Capture and link a series of images
- Image History – easily view or modify changes made
- Fully networkable and scalable for any size hospital
- Easy integration with Veterinary Teleradiology
- Acquire, view and share images on multiple monitors
- Transfer images between patients and owners
- Pre-existing templates can be modified to suit needs
- Fine-tune brightness, contrast and sharpness of any image
- Right/Left position clarification marker
- Add annotations to images as an overlay
- Comprehensive breed list for dogs and cats; add new species and breeds
- Image and patient information backup tool
- MS Word reporting templates – easily add logo and clinic information
- View images in their anatomical position
- Images and patient info remain together – no more lost or misplaced x-rays
- User-friendly search tool by patient, image, client, or by case category
- Create patient-based PDF documents
- Easily compare images taken in different studies or at different times
- Full support via phone, web or remote services

5449.....\$1,250.00

### Sensor Armor® Protective Jackets/Sheaths

Protective jackets help provide an additional measure of protection from the bumps and sometimes rough treatment but should not be considered protection from biting. Often used as an aid in positioning by adding an extra measure of grip to an otherwise slick surface. Use caution when inserting or removing the sensor and avoid pulling on the wire. May be cleaned with a mild solution of soap and water or antibacterial solutions. Should not be sterilized in an autoclave.



5457. Eva Vet Sensor Armor Jacket .....\$35.00

3043. Shipps Digital X-ray Sensor Sheaths size 2 500's.....\$29.95

### Head Wedge Feline Cranial Positioner

For use in feline dental imaging procedures, the Head Wedge™ is designed to make imaging difficult patients easier.

- Material does not interfere with digital imaging process
- Fixed base with two adjustable right-angle plates attached with nylon wing nuts
- Can be spread apart to create width, as well as pivot to create a right or left-hand wedge
- Slots can be expanded to hold different sensor sizes



6411.....\$645.00

### Image-Vet FleXX™

The latest portable intraoral dental X-ray generator for veterinary dental radiography. FDA approved handheld unit is lighter and less expensive. Smaller, well balanced, more compact, and weighs less than 4 lbs. so it is easy to manage. Double wrist straps allows operation with either hand with neck strap for hands-free portability.

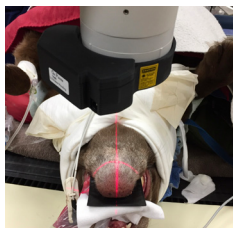


Safe and powerful at 60kv/2mA it produces high quality radiographs on even the largest patients. Double lead shielding prevents x-ray leakage with back scatter shield for user safety. Right and left exposure buttons for bilateral operation. High capacity Lithium-ion battery produces up to 500 shots per charge. Includes two rechargeable battery packs with station in hard case. Compatible with all digital dental imaging systems and high speed dental film. 1 year warranty.

5444.....\$4,995.00  
 5443. EVA Vet Select II, Image Vet Flexx, View All & laptop bundle.....\$13,995.00

### OnPointe X-Ray Laser Guide

One of the most innovative tools that has been developed to help make it easier to take diagnostic dental radiographs, which are one of the most important tools used to diagnose dental disease. Unfortunately, the process of becoming proficient in dental X-ray positioning is a challenge.



#### 3 parts of X-ray positioning:

- Correct sensor or plate placement
- Correct angle of X-ray head.
- Center of the beam is on center of the root.

The OnPointe X-Ray Laser Guide takes the guesswork out of accurately centering the X-Ray beam and is easy to master. Improves overall efficiency by reducing many common positioning errors such as "cone cutting" and missing root tips.

Attaches to the dental X-ray generator tube head (Collimeter) and produces a red laser X on the target. The center of the X-ray beam should to be placed over the center of the tooth root. This is a must for acquiring properly positioned dental X-rays.



Whether training new staff or just improving existing skills, the OnPointe Laser Guide is essential for every practice.

- Increases positioning accuracy
- Reduces anesthetic time
- Minimizes radiation exposure
- Easily attaches to X-ray tube head

Measure the outside diameter of the X-Ray generator tube head to select appropriate size. If there is not an exact size, select the next largest size.

6400. 2.5" diameter for Corix, IM3, Schick/Serona, Scil. ....\$425.00  
 6401. 2.625" diameter for Nomad .....\$425.00  
 6402. 2.75" diameter for AFP Image Vet, Sopex,Dentalaire DC. \$425.00  
 6403. 3" diameter for EzRay Vet Cart, Midmark, Xgenus DC .....\$425.00

### Thyroid collar

- Easy to apply neck collar, to protect thyroid.
- (0.5mm lead equivalency.)



1177. X-Ray lead thyroid collar.....\$52.95

### Pro-Tek Lead X-Ray Pad

To spot-protect any area of the patient's body. Dog Paw Cover Measures 18" x 24" 0.5mm LEP.



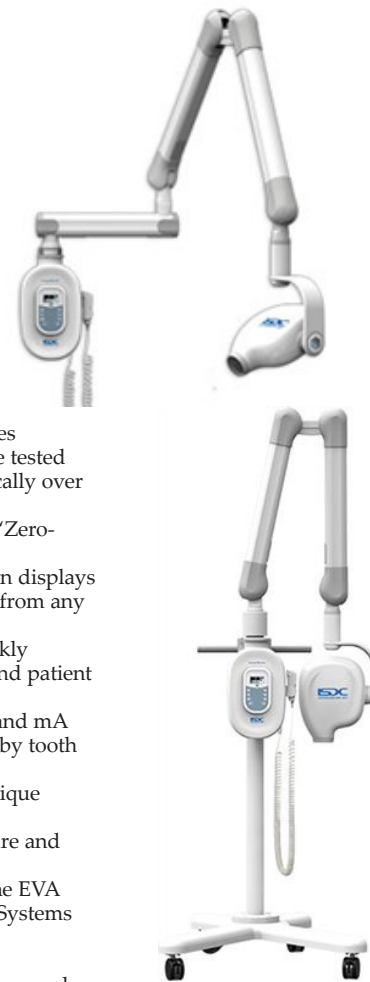
6062.....\$95.95

### ISDC Intraoral X-ray Generators

ImageWorks Veterinary ISDC technology represents the latest generation in the series of Image-Vet™ X-Rays. Image-Vet ISDC sets the standard for veterinary dental radiography. Choose from either the mobile or Wall mount. The mobile unit is precisely balanced for safe, quick transport and convenience.

#### Image-Vet™ ISDC Features:

- High Frequency 55 - 70kV / 4 - 8 mA
- Focal Spot 0.5mm
- Best image first time every time. Power Factor Correction assures highly stable and consistent output regardless of quality of input power source
- Reduced dosage. Patented shielding method makes leakage close to zero. The ISDC system significantly reduces harmful soft radiation, compared to conventional AC type machines
- Long lasting quality. Life cycle tested both mechanically and electrically over 200,000 cycles
- Refined arm movement with "Zero-drift"
- LCD display with bright screen displays technique information clearly from any angle
- Easy to understand icons quickly identify tooth, receptor type and patient size
- Appropriate selections of kV and mA are automatically determined by tooth selection and patient size
- Thirty pre-programmed technique settings streamline set-up and preparation for every procedure and every receptor
- Seamlessly compatible with the EVA Vet™ Digital Dental Imaging Systems



- Includes: ImageVet ISDC X-ray
- FREE Remote diagnostic services and online tech support
  - FREE Unlimited, Interactive Online Training Classes
  - Warranty: 24 Months

5462. Wall-Mount with 24" arm .....\$5,545.00  
 5463. Wall-Mount with 33" arm .....\$5,545.00  
 5464. Wall-Mount with 15" arm .....\$5,545.00  
 5465. Mobile.....\$6,495.00

### Premium Dental X-Ray Shield

Designed for the dental table for protection against secondary and scattered radiation from dental radiograph generators. Quality single piece model with aluminum frame, handle and folding legs with lead lined bottom frame. Total dimension 20" x 14" x 1" plus 2" handle and weighs 10lbs.



5047.....\$349.95



**Apixia EXL Phosphor Plate Scanner System**

The EXL® PSP Scanner is the ideal product for any size vet practice packing tremendous imaging power into a small package. Tiny enough to fit into the most crowded vet operatories, yet robust enough to be placed in a central location for use by the entire clinic.



Imaging with PSP plates is fast and simple offers all the flexibility and durability of film, combined with the immediacy and environmental benefits of digital radiography. The smart top-loading design harnesses the power of gravity for simple loading and fuss-free use. In just a short time, the crystal clear radiograph appears on the computer screen, ready for viewing. Simply insert the next exposed plate when ready.

The imaging software delivers dozens of powerful features, presented with simplicity that makes the system a snap for the user. Scanned x-ray images can be immediately viewed and mounted.

Various animal structures such as tooth apices, alveolar bone and dentition can be viewed with different size plates. Possible periodontal disease and calculus can all be seen clearly and diagnosed for comprehensive dental treatment plans. PSP plates are reusable a countless number of times to maximize your investment.

The stitch holder can capture maximum image area by putting four size 4 PSP Plates together. When capturing images on animals such as snakes, frogs and mice, the stitched holder allows for the entire image to be easily viewed. Lower dosages can also be used when shooting the hands, feet, or joints of large animals with accurate results.

Exclusive cleaning mode specially designed cleaning plates can be inserted into the PSP Scanner which allows for easy maintenance and long term durability.

**Scanner System Includes:**

- USB 2.0 cable
- 5M ethernet cable
- Power Adaptor
- 4x#2, 1x#4 and 1x#5 plates
- 300 #2, 100 #4 Barrier Envelopes
- Stitching envelope for size 4
- 12 Cleaning Plates
- 2 year Warranty of the scanner unit
- Metron Imaging Software
- Integrates with IDEXX software



- 6041. Complete System .....\$11,995.00
- 6042. Phosphor Imaging Plates Size 0 (35mm x 22mm) 4's.....\$165.00
- 6043. Phosphor Imaging Plates Size 1 (40mm x 24mm) 4's.....\$165.00
- 6044. Phosphor Imaging Plates Size 2 (41mm x 31mm) 4's .....\$165.00
- 6045. Phosphor Imaging Plates Size 3 (54mm x 27mm) 4's .....\$180.00
- 6046. Phosphor Imaging Plates Size 4 (76mm x 57mm) 2's .....\$320.00
- 6047. Phosphor Imaging Plates Size 5 (96mm x 57mm) 2's .....\$555.00
- 6048. Barrier envelopes for phosphor plates Size 0 500's .....\$105.00
- 6049. Barrier envelopes for phosphor plates Size 1 500's .....\$105.00
- 6050. Barrier envelopes for phosphor plates Size 2 500's .....\$105.00
- 6051. Barrier envelopes for phosphor plates Size 3 500's .....\$115.00
- 6052. Barrier envelopes for phosphor plates Size 4 300's .....\$155.00
- 6053. Barrier envelopes for phosphor plates Size 5 200's .....\$210.00
- 6054. Clear plastic phosphor plate carriers Size 0 30's .....\$80.00
- 6055. Clear plastic phosphor plate carriers Size 1 30's .....\$80.00
- 6056. Clear plastic phosphor plate carriers Size 2 30's .....\$80.00
- 6057. Clear plastic phosphor plate carriers Size 3 30's .....\$80.00
- 6058. Clear plastic phosphor plate carriers Size 4 20's .....\$90.00
- 6059. Clear plastic phosphor plate carriers Size 5 20's .....\$100.00
- 6060. Phosphor Plate Transfer Box.....\$165.00
- 6061. Apixia EXL Scanner System Cleaning Plates 12's.....\$57.00

**HOSPITAL EQUIPMENT & SUPPLIES**

**Bonart ART-E1 Electrosurgery/Cutting Unit**



State of the art radio frequency electrosurgical unit made universal to other major electrosurgical brands. Operation mode of cut, coagulation and cut-coagulation (not a cautery unit). Output power is up to 70 watts. Operation frequency is at 1.5 to 1.7 MHZ with 10 different power settings. Unit is a monopolar mode but bipolar converter is optional and available upon request. Electrodes are autoclavable, 1/16" diameter shafts. Includes a 7 piece variety electrodes set, 1 hand piece, 1 indifferent or grounding plate, 1 power cord, and 1 foot switch. Ideal for dental and dermatology use. 2 year warranty board, 1 year on accessories

E1 .....\$1,150.00

**Replacement Electrodes**

The larger the tip the higher the operating power, the smaller the tip, the lower the operating power.

**Ball end:** Best for hemostasis purposes.

**Loop end:** For skin tumors or gingival hyperplasia. Loop encircles and slices through tissue.

**Straight:** Thin wires work well on cutting, heavier wires work well for hemostasis.

- T1. Diamond Shaped Loop.....\$18.50
- T2. Small Loop.....\$18.50
- T3. Large Loop .....\$18.50
- T4. Fine Wire.....\$18.50
- T5. Heavy Wire.....\$18.50
- T7. Fine Oval Loop .....\$18.50
- T9. Heavy Ball .....\$18.50
- T1234579. Set of all 7.....\$99.95

**Hug-U-Vac Positioner**



Vacuum activated positioner that gently conforms to the contours of any size head and neck for secure, precise and comfortable support. Works in the ventral, dorsal or lateral positions for cranio-facial, dental, eye and neuro surgery, X-rays, Ultrasound and CT Scans. Conserves body heat, does not impede cervical venous outflow and cleans easily. Requires in-line suction or specifically designed manual pump for activation.



- 2634. Head Positioner 12" x 16" .....\$215.95
- 2636. Small 16" x 24" for puppies and kittens. ....\$223.95
- 2637. Medium 20" x 30" for small dogs and cats .....\$268.95
- 2638. Large 24" x 36" for medium dogs .....\$310.95
- 2639. X-Large 30" x 45" for large dogs .....\$375.95
- 2640. Jumbo 36" x 54" for large animals.....\$457.95
- 2635. Manual Pump.....\$169.95